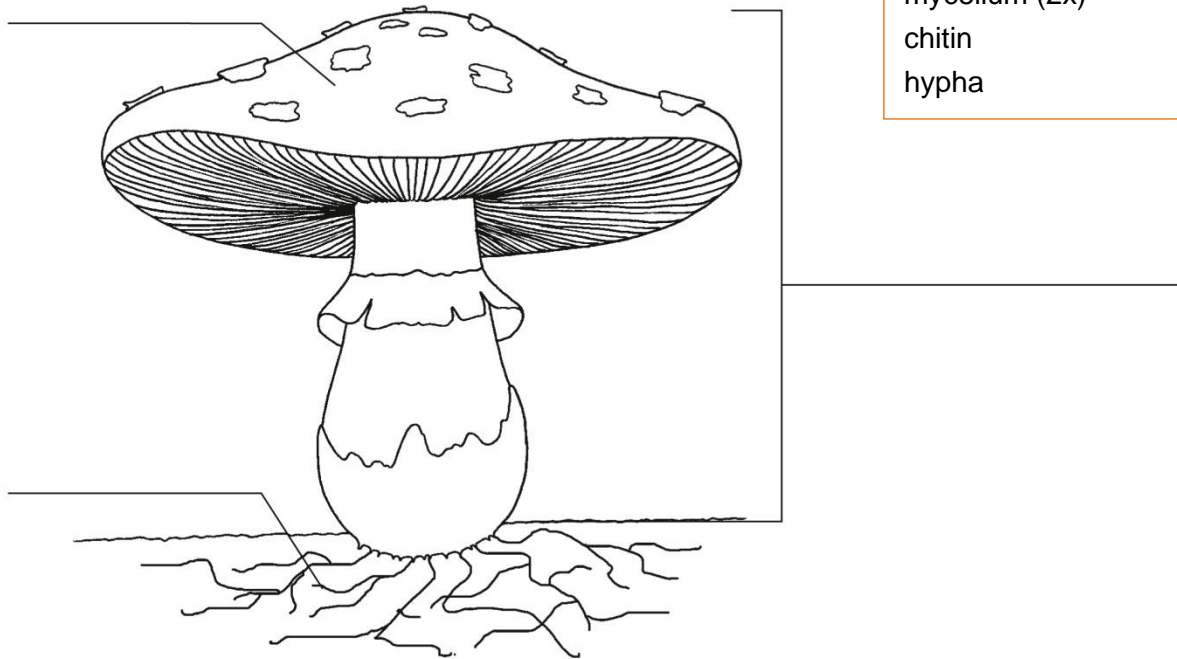


The structure of fungi

1 Label the drawing and complete the following text by using the key words.

Key words

- fruiting body
- fruiting bodies
- cap
- mycelium (2x)
- chitin
- hypha



2 Describe the picture.



Vocabulary box

- cap_____
- chitin_____
- fungusder Pilz
- fungidie Pilze
- fruiting bodySporenträger
- hyphaHyphen
- mycelium....._____

Above the surface you can see the young _____ of the fungus.

The body of the fungus or _____ grows in the soil.

Both consist of _____.

They contain _____.