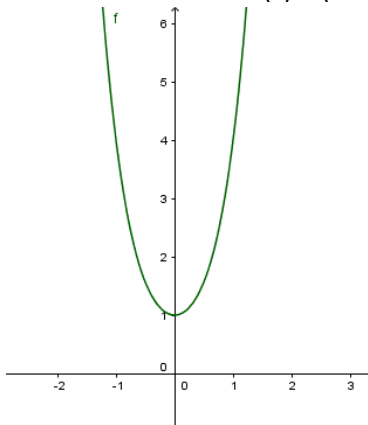
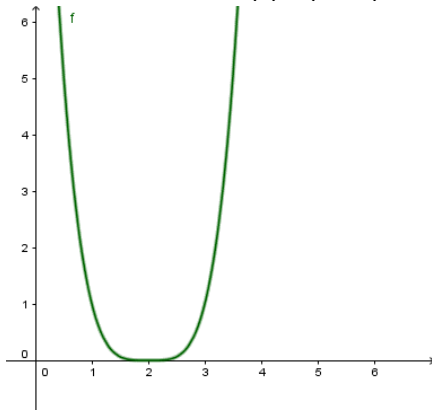


LÖSUNG ZU 38:

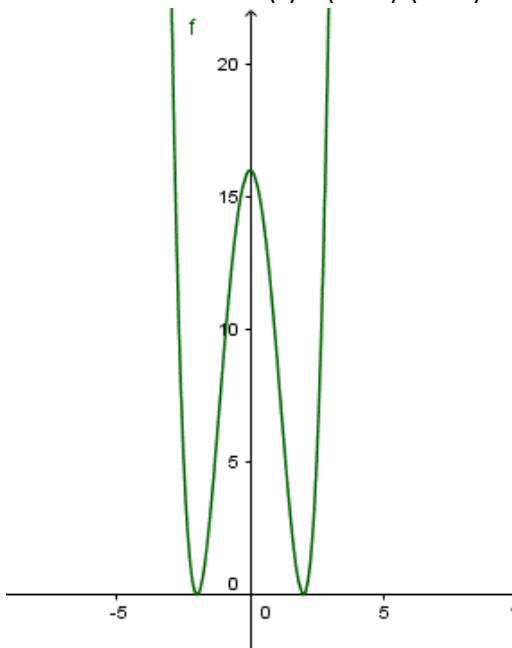
keine Nullstelle: z.B.  $f(x) = (x^2 + 1)^2$



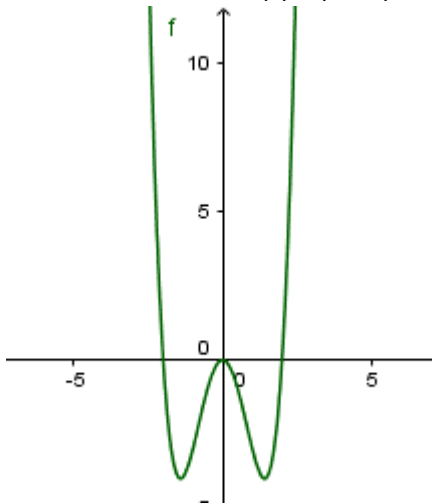
eine Nullstelle: z.B.  $f(x) = (x - 2)^4$



zwei Nullstellen: z.B.  $f(x) = (x - 2)^2(x + 2)^2$



drei Nullstellen: z.B.  $f(x) = (x - 2) \cdot x^2 \cdot (x + 2)$



vier Nullstellen: z.B.  $f(x) = (x - 1)(x - 2)(x + 1)(x + 2)$

